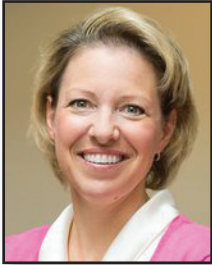


Managing Complex Cases



Tamara M. Tobias,
WHMP-BC, ARNP
Nurse Practitioner,
Supervisor
Seattle Reproductive
Medicine
Seattle, WA

Managing complex patients applies to all those struggling with infertility, but this presentation will focus on three categories and multiple cases that cause you to press pause. Complex cases of diminished ovarian reserve, ovarian cysts, and thin endometrium will be discussed. Diminished ovarian reserve can be very challenging with poor response to ovarian stimulation but age trumps all and young women with diminished ovarian reserve have no

difference in live birth rate. Ovarian cysts can cause patient anxiety, but it is important to know that most cysts are functional and benign. Another challenge is patients with persistent thin endometrial lining but those with a thin lining should not be denied potential for live birth.

The second category will focus on FDA considerations for possible future gamete donation. For example, should you perform FDA screening and testing for those freezing sperm prior to transitioning hormonal therapy?

The last part of the presentation will address pregnancy complications such as bleeding, molar and ectopic pregnancies. Those with infertility are at higher risk for ectopic pregnancy, thus prompt nursing assessment is critical for safe management.